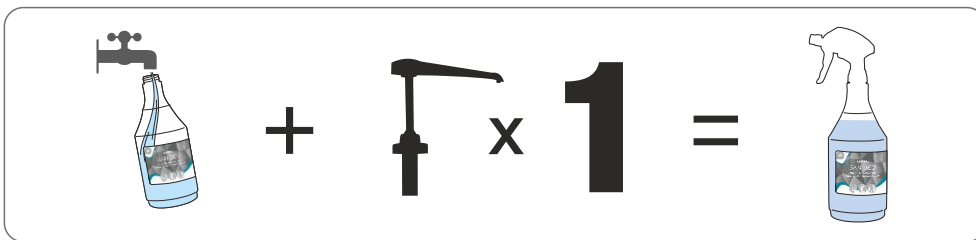


# LUFRA

# SAN DEO

A concentrated candy fragranced daily cleaner/ disinfectant suitable for use on all hard surfaces.

## DILUTION RATE



## METHOD OF USE



1 Fill an empty trigger bottle with 600ml of clean water.



2 Add 1 shot (30ml) of Lufra San Deo to the trigger bottle.



3 Spray diluted Lufra San Deo onto the area and work into the surface with a cloth.



4 For efficacy against bacteria, allow a 5 minute contact time on the surface.



5 Wipe away with a clean cloth. Leave the surface to air dry.

## EFFICACY STANDARDS

| BACTERICIDAL - EN 1276 |          |           |
|------------------------|----------|-----------|
| CONTACT TIME           | DILUTION | KILL RATE |
| 5 Minutes              | 1 : 23   | 99.999%   |

| ENVELOPED VIRUSES - EN 14476 |          |           |
|------------------------------|----------|-----------|
| CONTACT TIME                 | DILUTION | KILL RATE |
| 60 Seconds                   | 1 : 23   | 99.99%    |

All testing methods conducted in dirty conditions by an independent laboratory.

Use biocides safely. Always read the label and product information before use.

## PRODUCT INFO



Pack Size: 5L  
Product Code: 223  
Odour: Sweet  
Colour: Blue  
pH (undiluted): 6-8  
Shelf life: 2 years



For Health & Safety information, please scan the QR code provided.

THINK SAFE, CLEAN GREEN

Christeyns Professional Hygiene UK Ltd | Clover House | Whaley Bridge  
SK23 7DQ | T +44 (0) 1663 733 114 | W www.christeyns-ph.co.uk

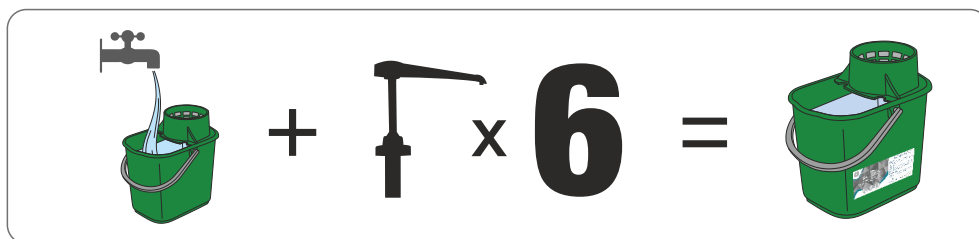
  
**CHRISTEYNS**  
PROFESSIONAL HYGIENE

LUFRA

# SAN DEO

A concentrated candy fragranced daily cleaner/ disinfectant suitable for use on all hard surfaces.

## DILUTION RATE



## METHOD OF USE



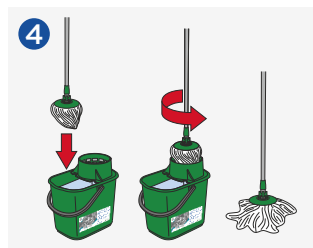
1 Place a wet floor sign in the area to be cleaned.



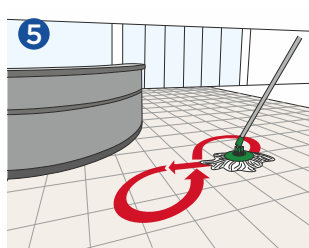
2 Fill an empty bucket with 5 litres of clean water.



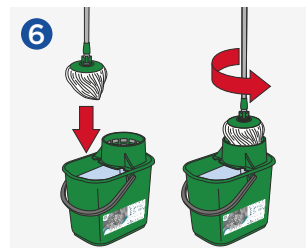
3 Dispense 6 pumps (180ml) of Lufra San Deo into the bucket.



4 Immerse the clean mop head into the bucket of Lufra San Deo solution and wring out the mop thoroughly.



5 Apply the mop to the floor and wipe in a figure of 8 motion, working the mop side to side.



6 Clean the dirty mop head in the bucket and repeat the previous steps until the floor is clean. Allow to air dry for a streak-free finish.

## EFFICACY STANDARDS

| BACTERICIDAL - EN 1276 |          |           |
|------------------------|----------|-----------|
| CONTACT TIME           | DILUTION | KILL RATE |
| 5 Minutes              | 1 : 23   | 99.999%   |

| ENVELOPED VIRUSES - EN 14476 |          |           |
|------------------------------|----------|-----------|
| CONTACT TIME                 | DILUTION | KILL RATE |
| 60 Seconds                   | 1 : 23   | 99.99%    |

All testing methods conducted in dirty conditions by an independent laboratory.

Use biocides safely. Always read the label and product information before use.

## PRODUCT INFO



Pack Size: 5L  
Product Code: 223  
Odour: Sweet  
Colour: Blue  
pH (undiluted): 6-8  
Shelf life: 2 years



For Health & Safety information, please scan the QR code provided.

THINK SAFE, CLEAN GREEN

Christeyns Professional Hygiene UK Ltd | Clover House | Whaley Bridge  
SK23 7DQ | T +44 (0) 1663 733 114 | W www.christeyns-ph.co.uk

  
**CHRISTEYNS**  
PROFESSIONAL HYGIENE



DISINFECTANTS

# LUFRA SAN DEO



- DEODORISES
- EFFECTIVE AGAINST BACTERIA, YEAST AND ENVELOPED VIRUSES
- STRONG CANDY FRAGRANCE

## PRODUCT DESCRIPTION

LUFRA SAN DEO is a deodoriser, cleaner and disinfectant concentrate that kills odour producing bacteria whilst simultaneously neutralising unpleasant odours.

LUFRA SAN DEO can be used to freshen spaces in hotels, night clubs, public houses, conference centres, public rooms and buildings, nursing and retirement homes, airports, departments stores, shops, ships, boats and ferries to leave behind a fresh candy fragrance.

## EFFICACY

A concentrated disinfectant-deodoriser. LUFRA SAN DEO has been tested against a range of standards, at a dilution as shown below by an independent laboratory.

| STANDARD   | DILUTION RATE | CONDITIONS | CONTACT TIME | PASSED           |
|--|---------------|------------|--------------|------------------|
| <b><u>Bactericidal</u></b>                                 |               |            |              |                  |
| EN 1276  | 1:23 (4.2%)   | Dirty      | 5 Minutes    | ≥5 log reduction |
| EN 13697   | 1:23 (4.2%)   | Dirty      | 5 Minutes    | ≥5 log reduction |
| <b><u>Yeasticidal</u></b>                                  |               |            |              |                  |
| EN 13697   | 1:23 (4.2%)   | Dirty      | 5 Minutes    | ≥4 log reduction |
| EN 1650  | 1:23 (4.2%)   | Dirty      | 5 Minutes    | ≥3 log reduction |
| <b><u>Virucidal</u></b><br><b><u>(enveloped virus)</u></b> |               |            |              |                  |
| EN 14476 (MVA)   | 1:23 (4.2%)   | Dirty      | 60 Seconds   | ≥4 log reduction |



## INSTRUCTIONS FOR USE

---

Dilute with water. Mop, spray or scrub with LUFRA SAN DEO. Allow the contact time shown in the table and then rinse well with clean water.

**Use biocides safely. Always read the label and product information before use.**

## DILUTION RATE

---

|   |             |
|---|-------------|
| Cleaning, Deodorising & Sanitising (Bacteria and Yeast) | 1:23 (4.2%) |
| Cleaning, Deodorising & Sanitising (Enveloped Viruses)  | 1:23 (4.2%) |

## ADDITIONAL INFORMATION

---

pH Level: 6-8

## STORAGE

---

Use above 5°C. Store preferably above 0°C.

## PACKAGING

---

Jerry Can 5 Litre

## NON WARRANTY

---

This information is based on our current knowledge and is intended to describe the product for the purposes of health, safety and environmental requirements only. It should not therefore be construed as guaranteeing any specific property of the product.

